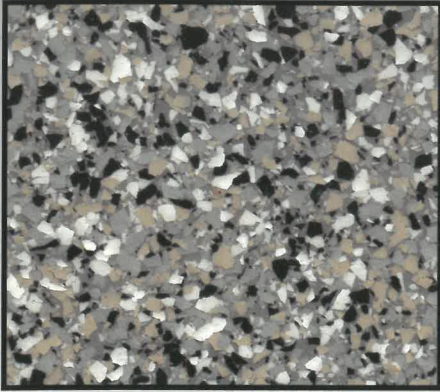


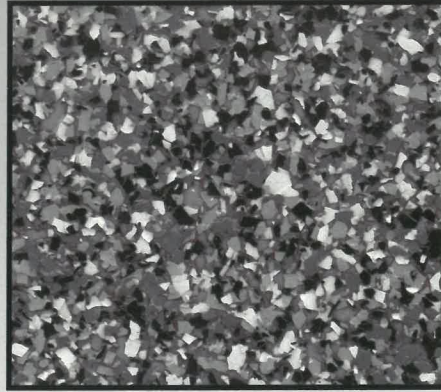
# MAGNESITE SPECIALTIES, INC.

## COLORFLAKE

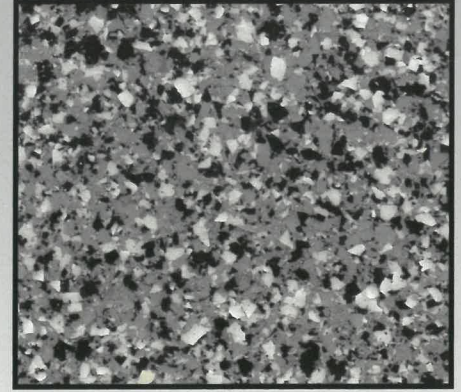
Decorative Epoxy Flooring System  
with 1/4" Vinyl Chips (100% Coverage)



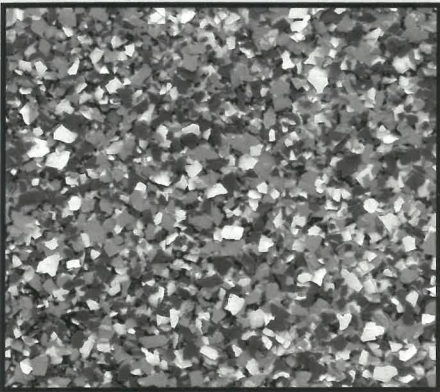
**MSI1 • GRAY BASE**  
600 - 601 - 606 - 610



**MSI2 • GRAY BASE**  
600 - 606 - 610 - 620



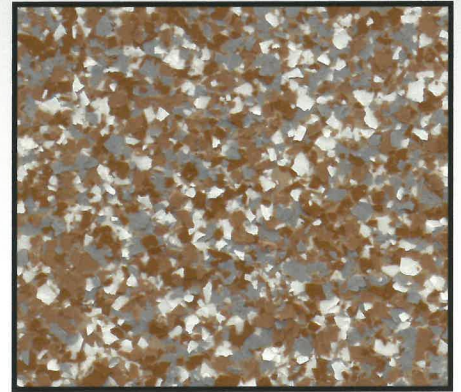
**MSI3 • GRAY BASE**  
600 - 606 - 610



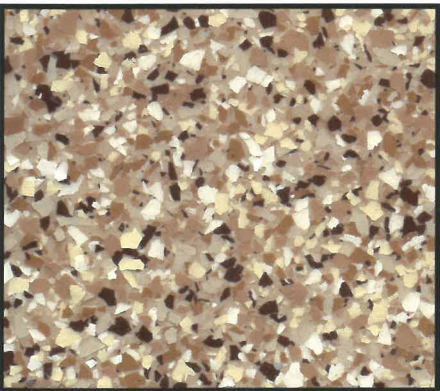
**MSI4 • GRAY BASE**  
600 - 606 - 620



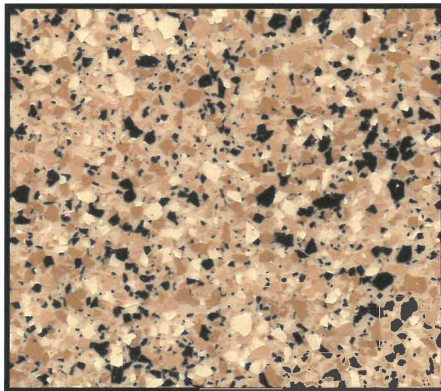
**MSI5 • TAN BASE**  
600 - 602 - 605 - 606



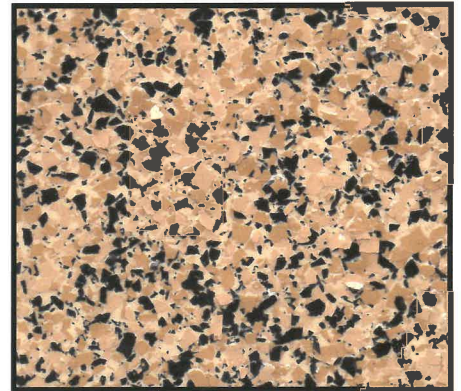
**MSI6 • TAN BASE**  
600 - 602 - 606 - 607



**MSI7 • TAN BASE**  
601 - 602 - 605 - 607 - 614 - 618



**MSI8 • TAN BASE**  
601 - 602 - 607 - 610



**MSI9 • TAN BASE**  
602 - 607 - 610

*Printed color charts approximate color. Final color approval should be made from actual sample.  
Final color appearance is affected by lighting, surface texture and method of application.  
Other colors and combinations are available.*

**Consult your Magnesite Specialties Representative for additional selections.**

**858.578.4186** [www.MagnesiteSpecialties.com](http://www.MagnesiteSpecialties.com)



MAGNESITE SPECIALTIES, INC.

# DEX-O-TEX<sup>®</sup>

## Standard Color Chart for

Epoxy • Urethane • Polyaspartic • ColorPax E • U • W



303 IVORY CREAM



413 SPEEDWAY GRAY



211 GREEN



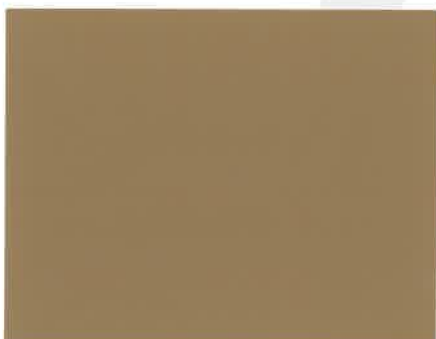
304 SANDPIPER BEIGE



431 BRIGHT GRAY



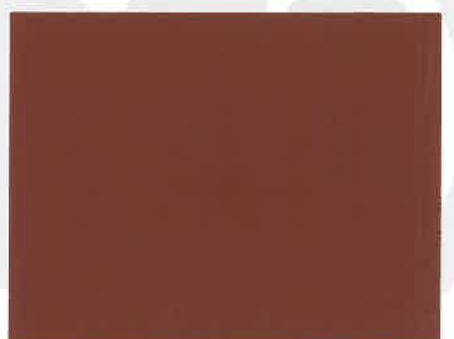
720 MEDIUM BLUE



503 ADOBE



402 DARK GRAY



607 BRICK RED

**ALSO AVAILABLE IN BLACK, WHITE, SAFETY RED AND SAFETY YELLOW. Consult your Dex-O-Tex Representative for other colors and combinations.**

**Printed color charts approximate actual color. Final color approval should be made from physical sample. Final color appearance is affected by lighting, surface texture and method of application.**

**Individual products may not be available in both gloss and matte finishes. Depending on product selection, a Clear Gloss or Clear Matte top coat may be required to achieve the desired look.**

*Contact us today for more information!*

[www.dexotex.com](http://www.dexotex.com)

West Coast • Rancho Dominguez, CA  
(310) 886-9100 • (310) 886-9119 fax

East Coast • Roselle Park, NJ  
(908) 245-2800 • (908) 245-0659 fax

# DEX-O-TEX<sup>®</sup>

## Standard Color Chart for AJ-44 & ColorPax LIP



303 Ivory Cream



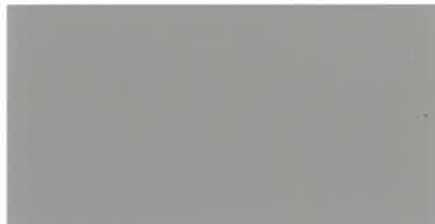
413 Speedway Gray



2101 Toffee



304 Sandpiper Beige



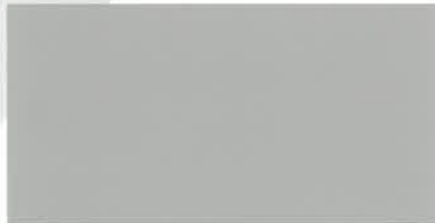
431 Bright Gray



2102 Copper Kettle



3304 Provincial Tan



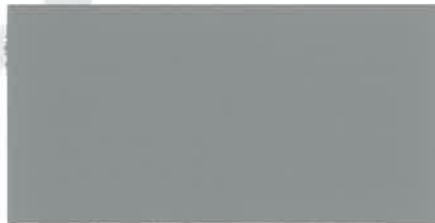
4413 Dolphin Gray



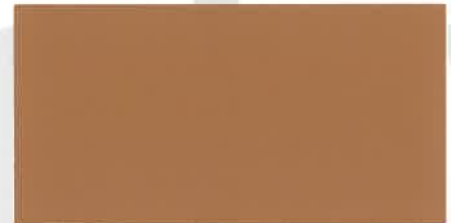
606 Spanish Tile



3305 Dodge City Tan



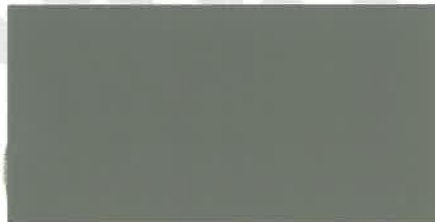
402 Dark Gray



2103 Fired Brick



503 Adobe



4501 Slate Green



2601 Redwood Tile

**ALSO AVAILABLE IN BLACK, WHITE, SAFETY RED AND SAFETY YELLOW.**

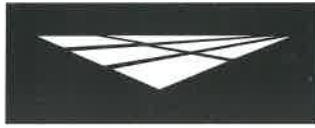
Color charts approximate actual color. Final color appearance is affected by lighting, surface, texture, method of application and curing conditions. Final color approval should be made from a physical sample. Depending on product selection, a Clear Gloss, Matte or Satin top coat may be required to achieve the desired look. Consult your local Representative (go to **FIND A REP** on our website) for other colors and combinations.

West Coast • Rancho Dominguez, CA  
(310) 886-9100 • (310) 886-9119 fax

Contact us today for more information!

[www.dexotex.com](http://www.dexotex.com)

East Coast • Roselle Park, NJ  
(908) 245-2800 • (908) 245-0659 fax



C O L O R   C H A R T



Travatan | 40



Sandy Beige | 78



Spanish Brown | 43



Arizona Tan | 82



Rocky Nook | 26



Sand | 11



Omaha Tan | 53



Deep Tan | 27



Concrete Gray | 52



Pewter Gray | 12



Cape Cod Gray | 41



Stone Gray | 42



Lawn Green | 04



Mission Red | 76



Tile Red | 34



Slate Blue | 14

**CAUTION:**

Color will vary. This chart is for reference only. Please request an actual color sample or apply sample on site before beginning any project.